



## Installation instructions

### Version 3.x

Issued: March 2019

The GISconnector® is a product of GI Geolabs GmbH, Augsburg

[www.gisconnector.de/en/](http://www.gisconnector.de/en/)

GI Geolabs GmbH  
Morellstraße 33  
86150 Augsburg  
Germany

Contact information

GI Geolabs GmbH  
info@gi-geolabs.de  
+49 (0) 821 25869 70

GI Geolabs GmbH

## Table of Contents

1.	Installation requirements .....	2
2.	Installation GISconnector for Excel.....	3
3.	Use of ArcGIS licenses by the GISconnector .....	6
4.	Start parameter for configuration of the license level.....	7
5.	Installation of the license administration.....	9
5.1	Single Use license activation.....	9
5.2	Request Single Use license activation .....	9
5.2.1	Conduct Single Use license activation.....	11
5.3	Installation of the Concurrent Use license administration.....	12
5.3.1	Installation of the FlexNet Publisher License Server Manager .....	13
5.3.2	Installation of the Geolabs Server Administrator.....	16
5.4	Concurrent Use license activation .....	17
5.4.1	Request Concurrent Use license activation.....	18
5.4.2	Conduct Concurrent Use license activation.....	19
5.4.3	Start Concurrent Use license service .....	20
5.4.4	Concurrent Use License Administration with FlexNet Publisher .....	21
6.	Script-based licensing (System Administrator).....	27
7.	Unattended Installation (System Administrator) .....	28
	Appendix .....	29

## 1. Installation requirements

To install the GISconnector for Excel, you need administration rights for your Windows user account.

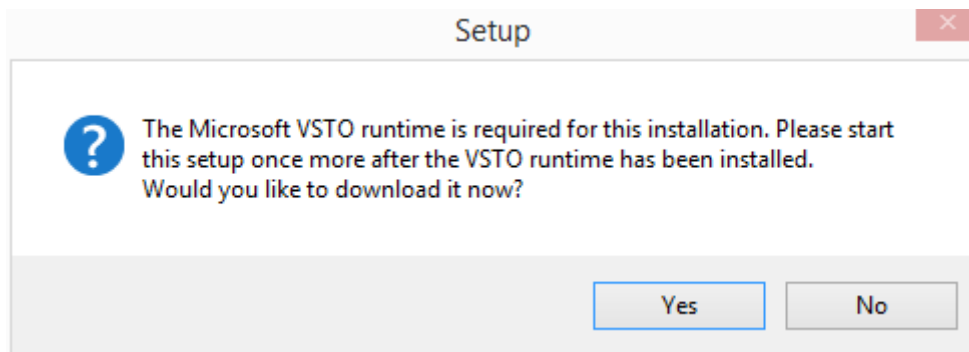
To install the GISconnector at least the following system requirements have to be fulfilled:

- ArcGIS for Desktop 10.1 (SP1 recommended)  
also supported: ArcGIS 10.2, 10.2.1, 10.2.2, 10.3, 10.3.1, 10.4, 10.4.1, 10.5
- Microsoft Excel 2007 (SP2 recommended)  
also supported: Microsoft Excel 2010, 2013, 2016
- Microsoft Windows XP,  
also supported: Windows Vista, 7, 8, 8.1, 10
- Microsoft .NET Framework 4.0  
<http://www.microsoft.com/en-US/download/details.aspx?id=17718>
- Microsoft VSTO-Runtime Environment  
<https://www.visualstudio.com/en-us/downloads/download-visual-studio-vs.aspx#>  
(Download page is being opened during installation)

## 2. Installation GISconnector for Excel

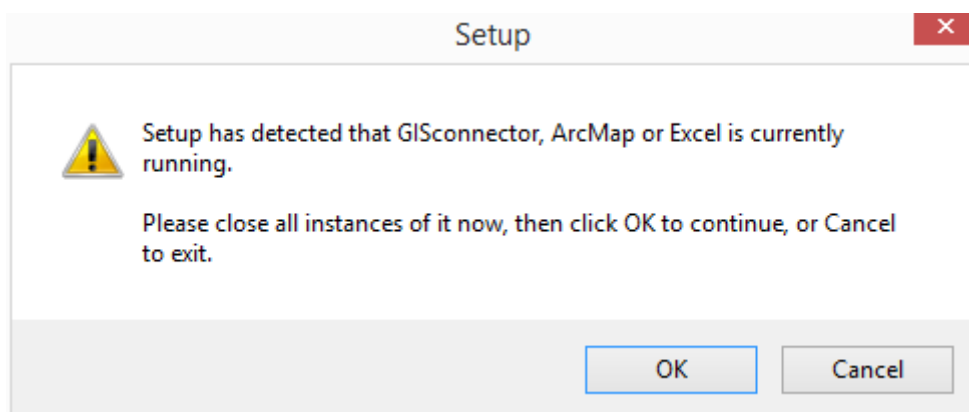
To start the installation please run the setup .exe. If all installation prerequisites are fulfilled the installation wizard will start.

The setup will prove, if the Microsoft VSTO runtime environment is available. It will be needed for the installation of the Microsoft Excel Add-In. If you have not installed Microsoft VSTO runtime environment the following dialogue will appear:



If you confirm with 'Yes' you will be redirected to the download page of Microsoft where the file is available (approx. 40 MB). After downloading the VSTO runtime environment (vstor\_redist.exe) please install it. Restart your computer after the installation.

In case ArcGIS or Excel are still running during the installation the setup will not work. Please close Excel and ArcGIS, then press "Retry" to continue the installation.



Now you must start the setup file of the GISconnector again. Within the next steps, you must accept the end user license agreement (EULA) and read our general terms of business.

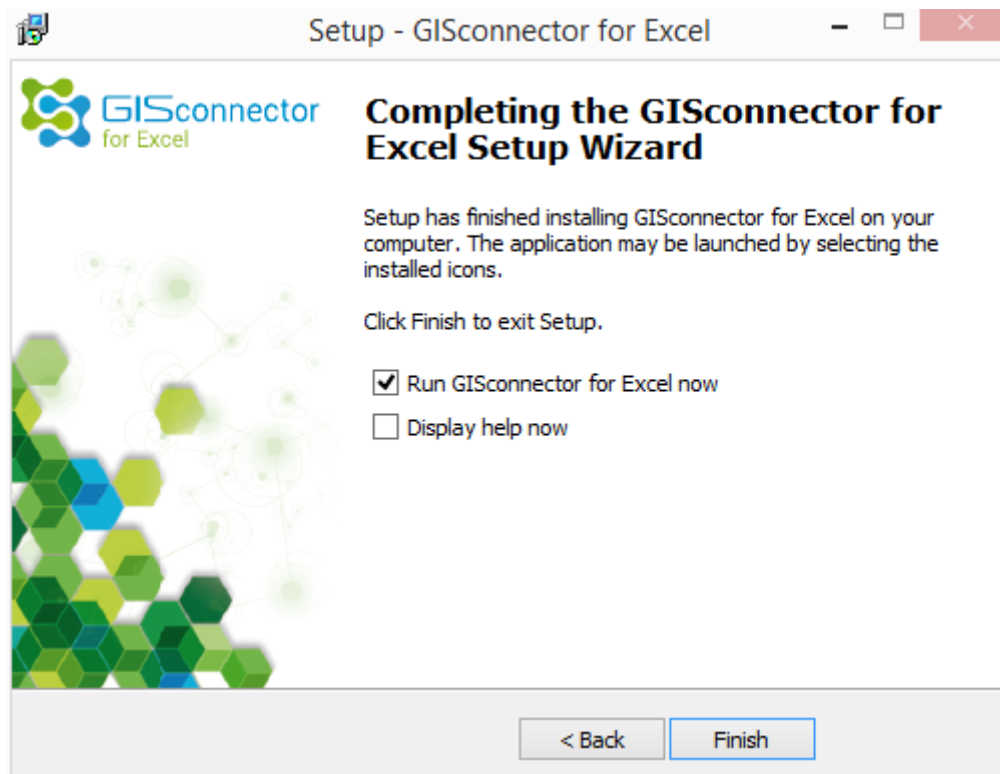
Select the installation folder (Default folder: C:\Program Files (x86)\GI Geolabs GmbH\GISconnector for Excel) as well as a folder in the main menu.

Select if you want to create a GISconnector shortcut in the AutoStart folder. By default, a shortcut in the AutoStart folder will be created to launch the GISconnector when you start Windows.

We recommend the following settings:

License type	User, that work on the machine	Shortcut in the AutoStart
Single Use	One user	Yes
Single Use	Multiple users	No
Concurrent Use		No

After a successful installation, the GISconnector for Excel can be run.



When the GISconnector is running the GISconnector-Icon appears in the system tray. (System tray customization: 'show icon and notifications').

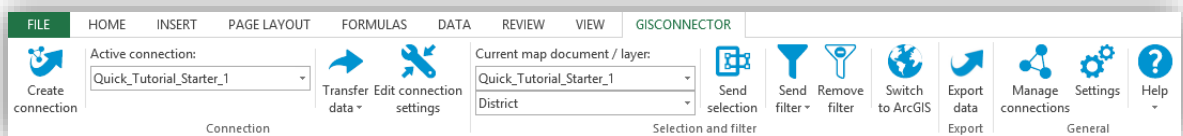


After installing the GISconnector the new ArcGIS-toolbar and the new ribbon in Excel are available and ready for use.

ArcGIS toolbar 'GISconnector for Excel':



Excel ribbon 'GISconnector':



If the GISconnector is not licensed the time span for using it will be limited.

### 3. Use of ArcGIS licenses by the GISconnector

When starting the GISconnector an ArcGIS license is required.

Since GISconnector version 1.2 the ArcGIS license which is configured within ArcGIS Administrator will be used for the GISconnector. If different ArcGIS license levels are available it is possible to define the license level the GISconnector uses by a command line parameter (see manual, chapter 4).

If the GISconnector is started with a license command line parameter and therefore uses a certain ArcGIS license and ArcMap is started with a different license level two ArcGIS licenses are demanded at the same time.

#### Example

In ArcGIS Administrator, the use of an advanced concurrent license is defined. GISconnector uses a basic license which has been defined in the command line parameter. In this case ArcMap and the GISconnector use different ArcGIS licenses. Therefore, two ArcGIS licenses are demanded.

## 4. Start parameter for configuration of the license level

### Assessing the ArcGIS license level

When starting the GISconnector, an ArcGIS license must be available.

If more than one ArcGIS license level is available, the GISconnector always tries to acquire the highest ArcGIS license level possible (Basic, Standard, and Advanced).

This can result in an undesired behavior: If your ArcGIS licensing is based on Concurrent licensing, you may have only a limited amount of ArcGIS Standard or Advanced licenses available. Users in your network working with the GISconnector could therefore block your Standard or Advance licenses and they will not be available anymore for other users.

For this situation, we have introduced a start parameter. With this parameter, you can tell the GISconnector the license level it should request when starting.

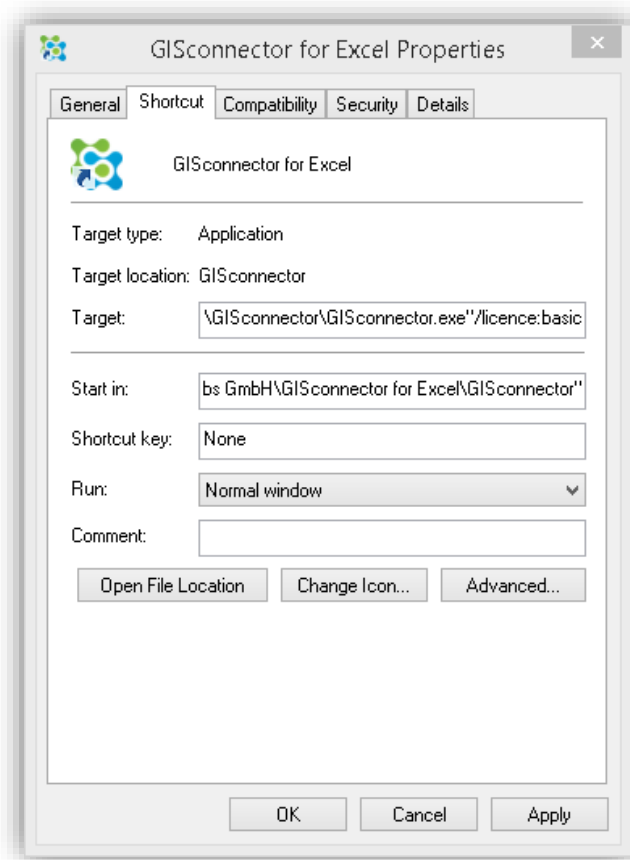
### GISconnector for Excel available in the AutoStart folder

1. Press the keys [Windows] and [R] simultaneously, so that the window 'Run' is going to open.
2. Insert 'shell:common startup' here and confirm with 'OK'. The AutoStart folder is going to open.
3. Right-click on the GISconnector shortcut, to get to the AutoStart properties.
4. Insert the start parameter (see below).

### GISconnector for Excel not available in the AutoStart folder

1. Go to Menu → All Programs → GI Geolabs GmbH → GISconnector for Excel and right-click 'Start GISconnector for Excel' to get to the Start properties.
2. Insert the start parameter (see below).





## 5. Installation of the license administration

The GISconnector supports licensing for Single Use (machine based license) and Concurrent Use (network licenses). Along with the installation of the GISconnector for Excel, the application 'Geolabs Administrator' is being installed. The Geolabs Administrator allows switching between Single Use and Concurrent Use licensing. Single Use licensing can be administrated with the Geolabs Administrator.

To use Concurrent Use licensing, the application 'Geolabs Server Administrator' must be installed. This application is not being installed when installing the GISconnector for Excel application.

### Single Use licensing

By Single Use licensing, one machine or virtual machine is licensed to run the GISconnector as a full version. The Single Use license file generated with the Geolabs Administrator and the serial number will contain information depending on the hardware configuration of the machine. If hardware parts of the machine are exchanged, the license might not be valid anymore and the licensing must be repeated (license repair).

### Concurrent Use license

A Concurrent Use license can be installed on as many machines as you like to. You can only use as many licenses simultaneously as you have purchased and are therefore available for checkout from your license server.

### 5.1 Single Use license activation

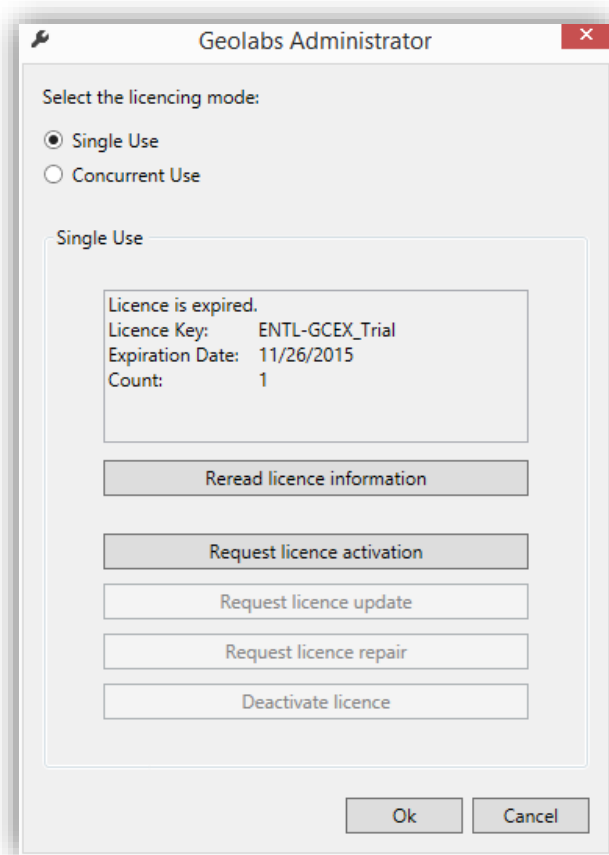
The deployment of the Single Use license service and the Single Use license activation are ensued by 'Geolabs Administrator'. The application is installed together with the GISconnector.

To activate a Single Use license, you will need 'Geolabs Administrator'.

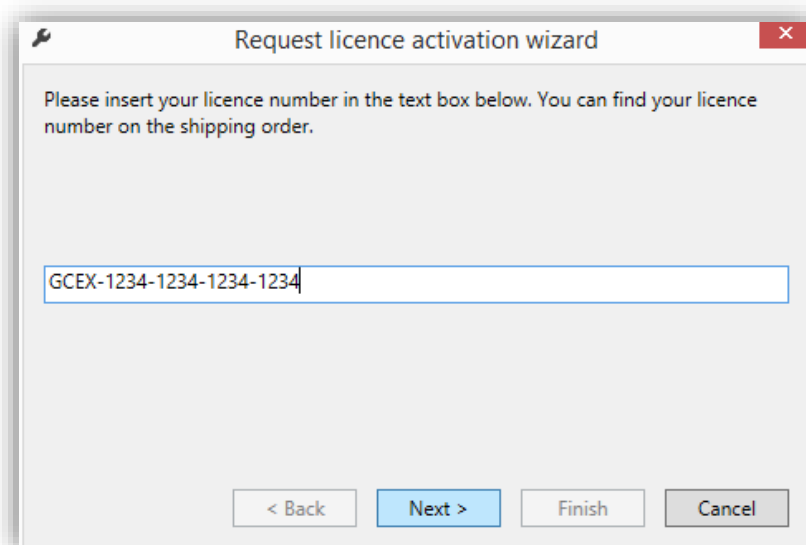
Go to all programs → GI Geolabs GmbH → GISconnector for Excel and start the 'Geolabs Administrator'.

### 5.2 Request Single Use license activation

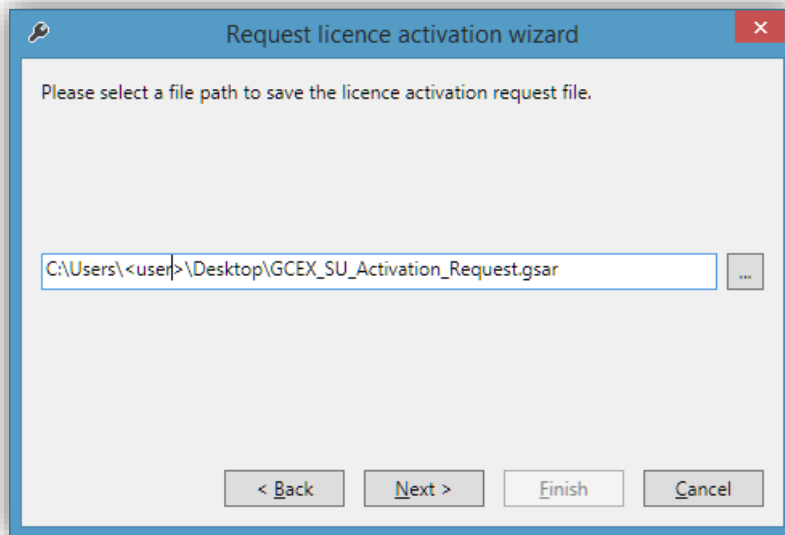
Choose option 'Single Use' as a licensing mode. Now press 'Request license activation'.



In the next step, please enter your GISconnector license number (Syntax: GCEX-1234-1234-1234-1234) and click 'Next >'.



Save the license file in the following step.



By pushing 'Next >' and 'Finish' the wizard will be closed and the License Activation Request File will be saved at the path given before.

To get the license file activated, please send it (GSAR file) to GI Geolabs GmbH for activation (service@gi-geolabs.de).

After activation, we will send the file back to you.

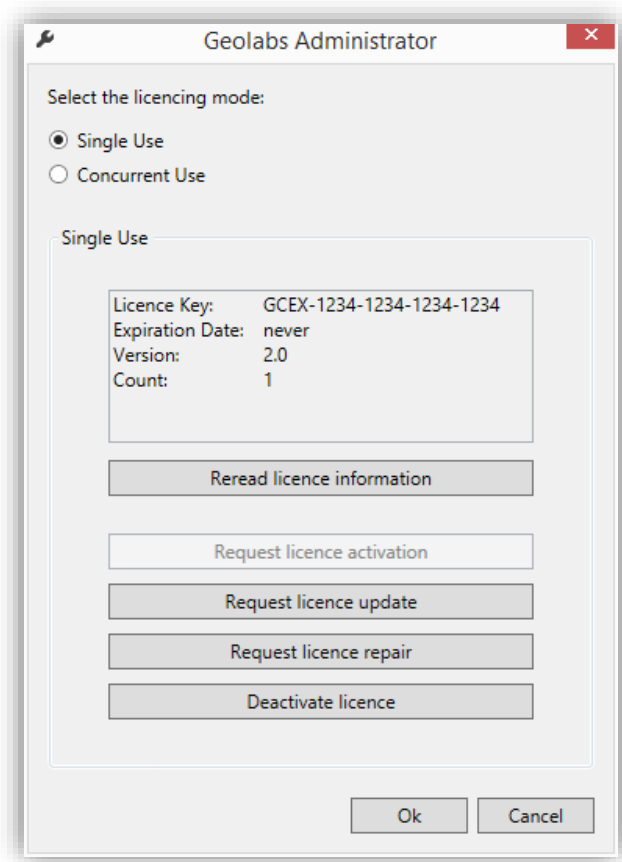
### 5.2.1 Conduct Single Use license activation

Save the activated license file (GSAP file) on your machine.

Double-click the activation file (GSAP file). You might have to refresh the Geolabs Administrator with the button 'Reread license information' if the Geolabs Administrator has been open before.

Restart the GISconnector to use the activated license.

Now you can use your Single Use license.



### 5.3 Installation of the Concurrent Use license administration

To make Concurrent licensing available, the license server application must be installed on a license server. The deployment and administration of the Concurrent Use license service is conducted with 'FlexNet Publisher License Server Manager' from Flexera and the Geolabs Server Administrator of GI Geolabs GmbH.

The Concurrent Use license activation is performed with the 'Geolabs Server Administrator'.

Please conduct the following installation steps on the license server in the given order:

1. Install the FlexNet Publisher License Server Manager
2. Install the Geolabs Server Administrator
3. Afterwards perform the Concurrent Use license activation

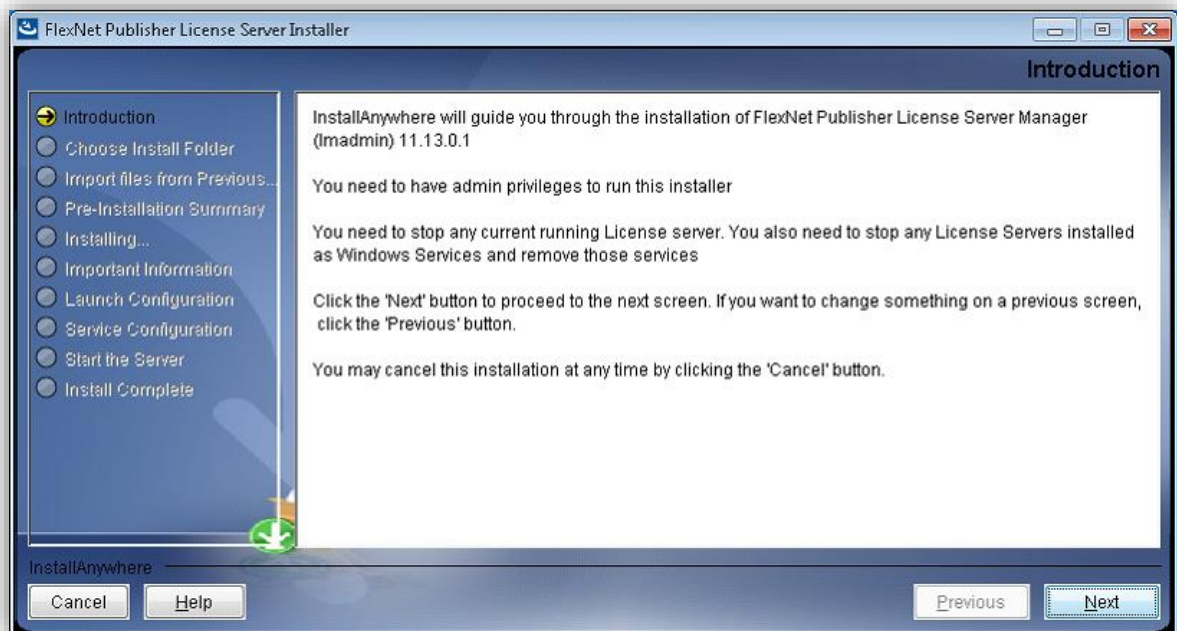
### 5.3.1 Installation of the FlexNet Publisher License Server Manager

The installation is only necessary if the program has not already been installed due to other applications (e.g. Adobe, Autodesk, Citrix etc). Please consider the version if already installed.

The FlexNet Publisher License Server Manager is available for the following operating systems:

- 64bit OS (ladmin-x64\_n6-11\_13\_0\_1.exe)
- 32bit OS (ladmin-i86\_n3-11\_13\_0\_1.exe)

After starting the appropriate installer, a wizard will guide you through the installation:



Accept all configurations by pressing 'Next' until 'Launch Configuration'.

**'Launch Configuration' Settings:**

#### *HTTP Port Number*

The HTTP Port Number is required for accessing the web interface (Web Server Interface). For HTTP, it is 8090 per default. You can access it via <http://localhost:8090> or <http://<server>:8090>. If you choose to use another HTTP Port, you must state it later when defining the license server in the Geolabs Server Administrator.

If you would like to access the web interface via HTTPS, you must configure it after the installation in the web interface (FlexNet Publisher → Server Configuration → Secure Web Server Configuration → enable HTTPS).

Per default the HTTPS-Port is 0 (no HTTPS). If you change this port to use HTTPS, you must stop the license server and restart it.

### ***License Server Port Number***

The License Server Port Number is configuring the License Server Manager Port (access to license server for client inquiries). Per default it is the first available number in the range of 27000 until 27009. If you would like to assign the Port Number automatically you have to enter 0.

If you are using a firewall, it is recommended to use a Port Number outside the range of 27000 - 27009. You can find a [list of Standard Port Numbers](#) here.

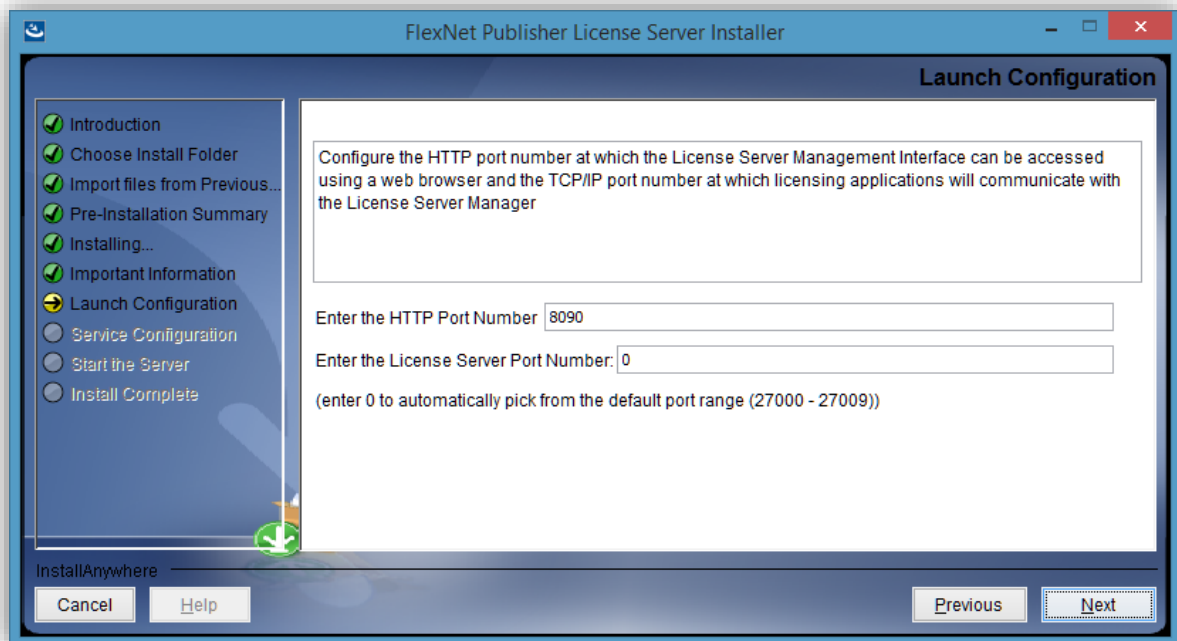
### ***Vendor Daemon Port***

The Vendor Daemon Port controls the intern communication of the server and the Vendor Daemon. Per default this Port must not be defined (which is also not possible during installation). The operating system will define it when running.

However, if you use a firewall, you should define this port: (FlexNet Publisher → Vendor Daemon Configuration → Administer → Vendor Daemon Port → Use this port).

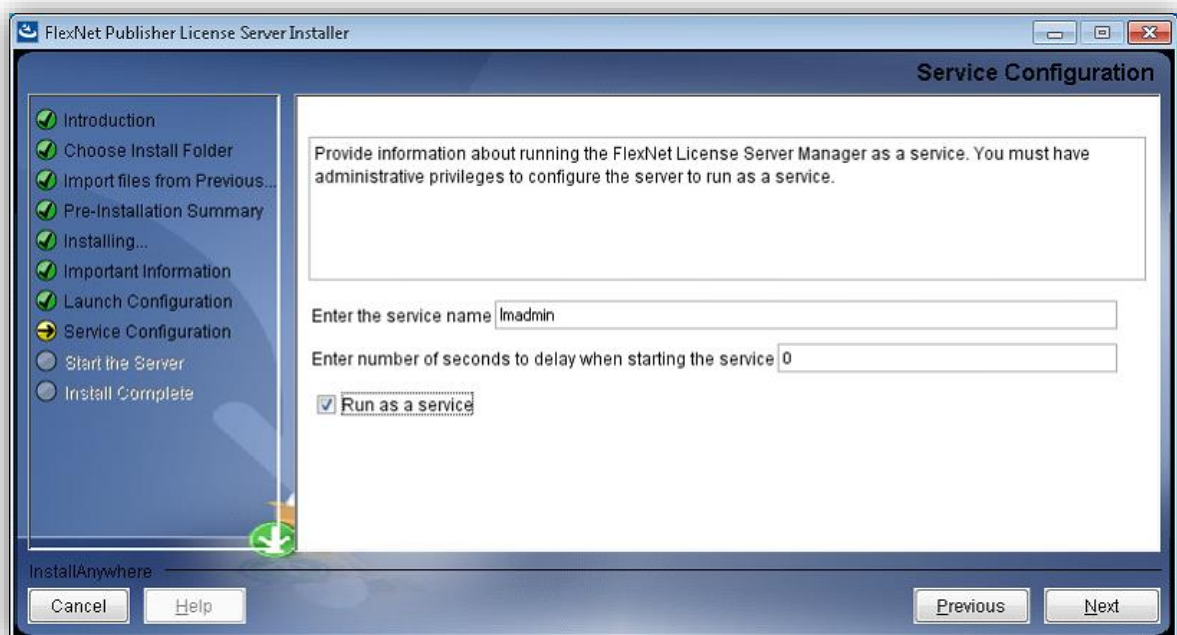
### **Important hint:**

You must make sure that the used Ports (HTTP/HTTPS-Ports, License Server Port Number, and Vendor Daemon Port) are open in your firewall. Otherwise clients cannot request licenses and the browser-based access to the web interface is impossible, respectively.



Click 'Next'.

At the step 'Service configuration', you should choose the option 'Run as a service'. Choosing this option tells the server to start the FlexNet service automatically after booting.





### Important advice:

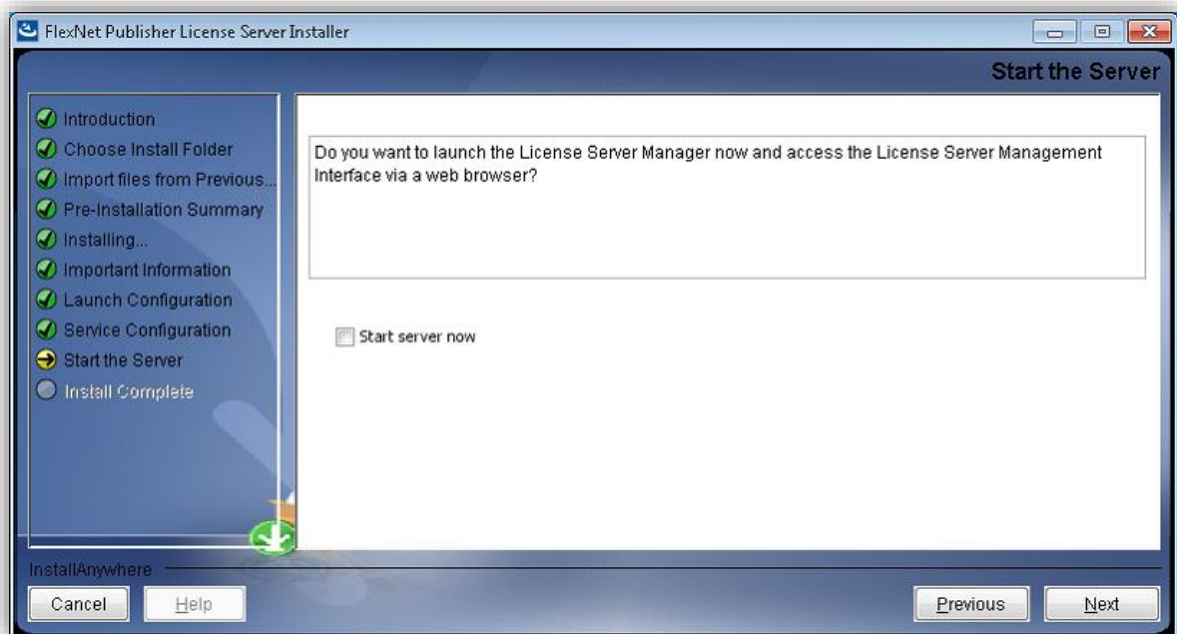
This option can be activated after the installation by setting the following parameter: '-installService <ServiceName>'.

E.g.: 'C:\Program Files\FlexNet Publisher License Server Manager\ladmin.exe' – installService ladmin

If you like to remove this feature after the installation, enter the following parameter:

E.g.: 'C:\Program Files\FlexNet Publisher License Server Manager\ladmin.exe' – removeService ladmin

At 'Start the Server', deactivate the option 'Start server now', as you should activate a license with the Geolabs Server Administrator before (see chapter Concurrent Use license activation).



The installation of FlexNet Publisher is now completed. Please install Geolabs Server Administrator now.

### 5.3.2 Installation of the Geolabs Server Administrator

Install Geolabs Server Administrator on the same machine/server on which you have installed FlexNet Publisher and start the application afterwards.



## 5.4 Concurrent Use license activation

The Concurrent Use license activation is conducted with the application 'Geolabs Server Administrator' on your license server (Start → All programs → GI Geolabs GmbH → GISconnector for Excel).

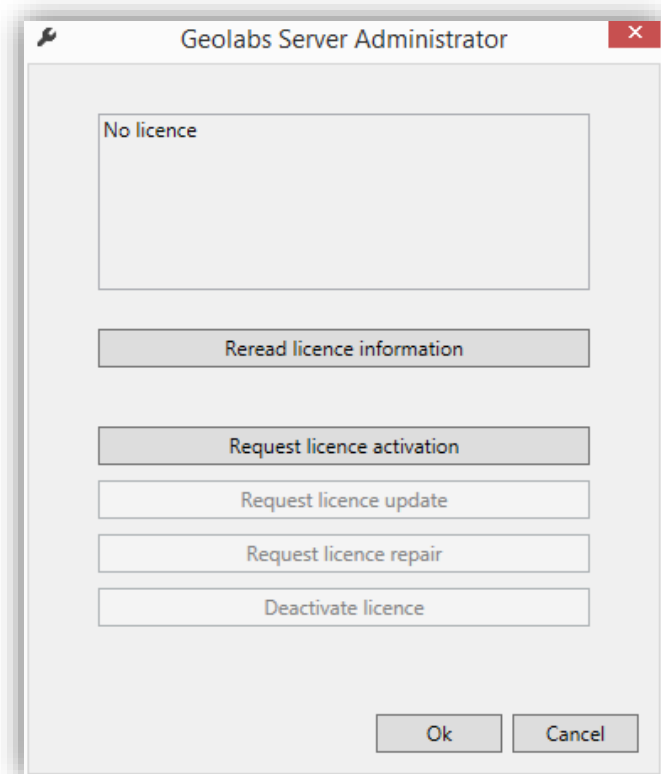
The 'Geolabs Server Administrator' is not part of the GISconnector for Excel installation and must be installed separately (see installation of the Concurrent Use license administration).

To activate the Concurrent Use license, the following steps have to be conducted:

1. Request Concurrent Use license activation
2. Perform Concurrent Use license activation
3. Start Concurrent Use license service
4. Check Concurrent Use license service

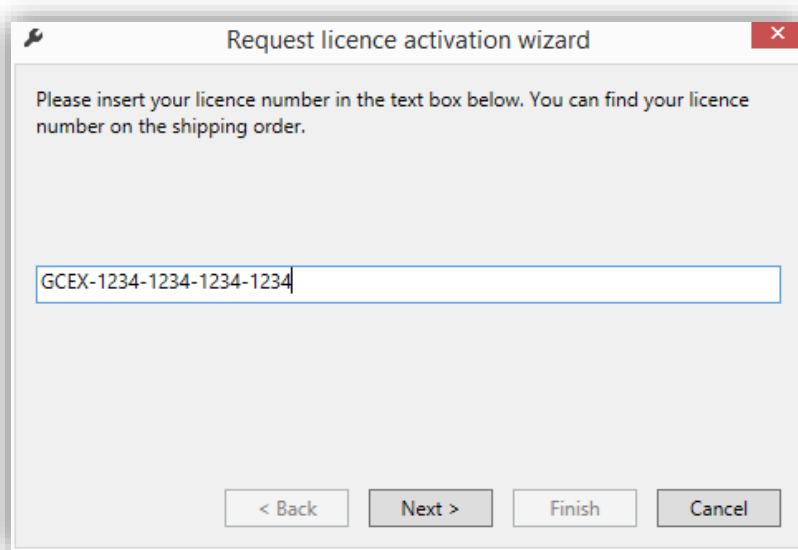
### 5.4.1 Request Concurrent Use license activation

After starting the Geolabs Server Administrator (Start → All programs → GI Geolabs GmbH → GISconnector for Excel → Geolabs Server Administrator), the license activation can be requested.



Click on 'Request license activation' to start the wizard, which leads through the activation process.

Enter your GISconnector for Excel license key (Syntax: GCEX-1234-1234-1234-1234).



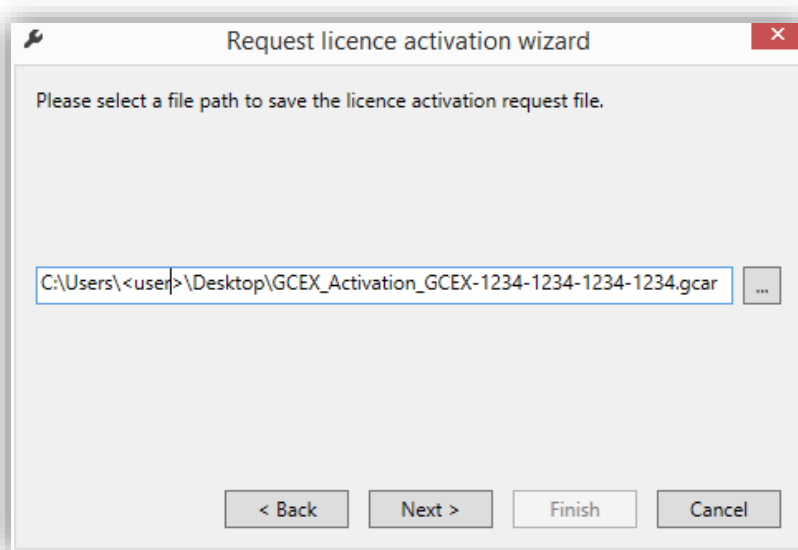
**Request licence activation wizard**

Please insert your licence number in the text box below. You can find your licence number on the shipping order.

GCEX-1234-1234-1234-1234

< Back   Next >   Finish   Cancel

Save your license activation request file (GCAR file).



**Request licence activation wizard**

Please select a file path to save the licence activation request file.

C:\Users\<user>\Desktop\GCEX\_Activation\_GCEX-1234-1234-1234-1234.gcar ...

< Back   Next >   Finish   Cancel

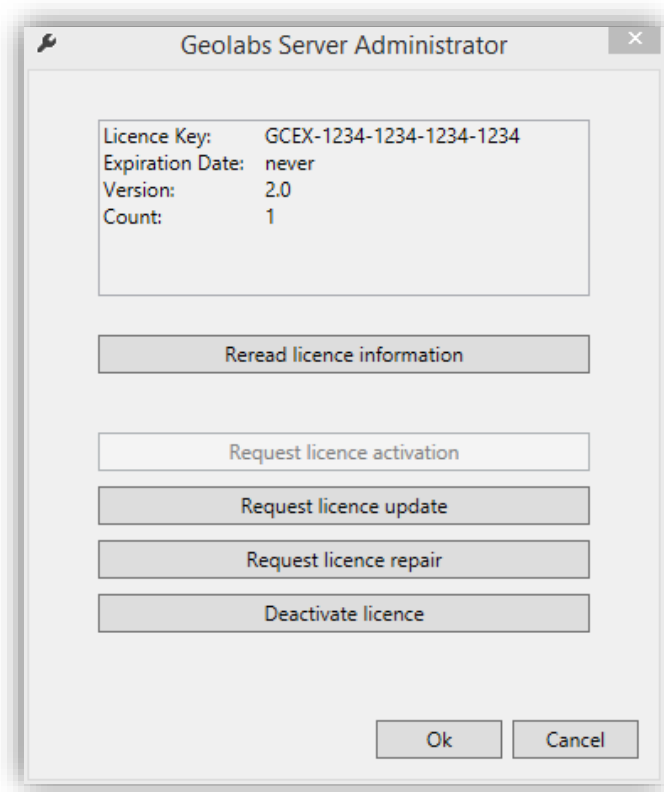
Click 'Next →' to close the wizard.

Please send the license file (GCAR file) to GI Geolabs GmbH for activation ([service@gi-geolabs.de](mailto:service@gi-geolabs.de)). After activation, you will receive the license file from us.

#### 5.4.2 Conduct Concurrent Use license activation

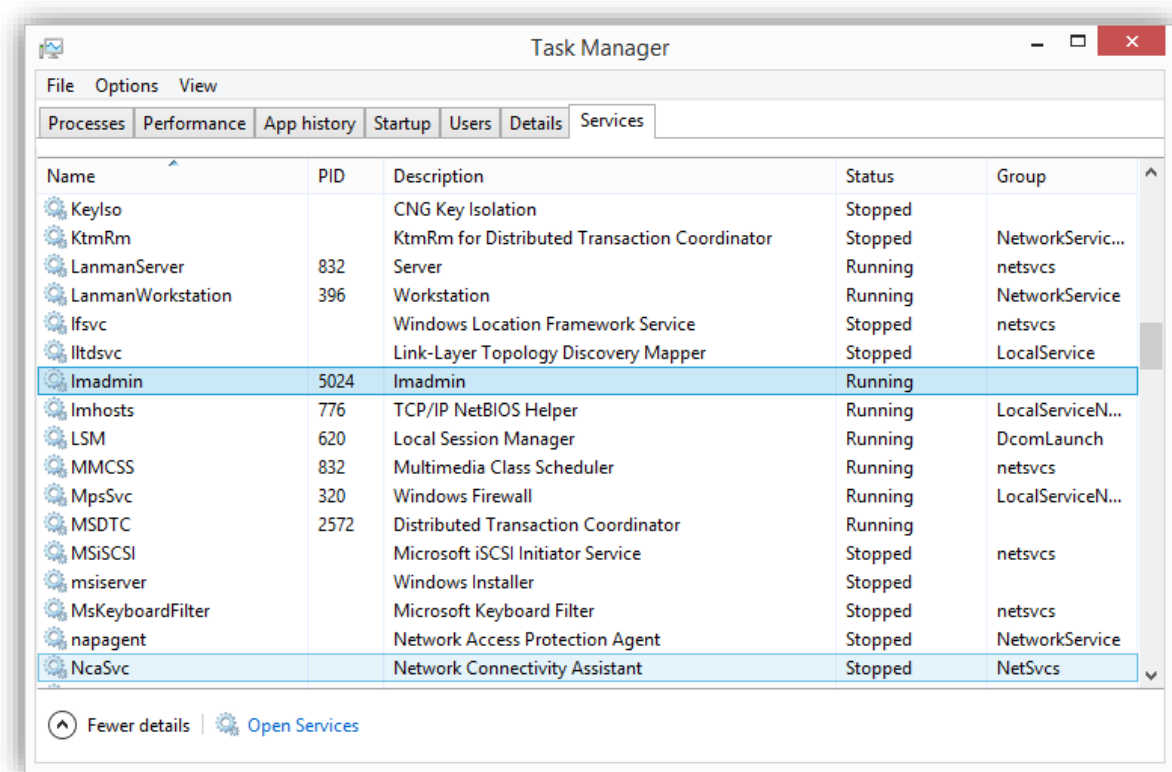
Save the activated license file (GCAP file) on your server.

Double-click the activation file (GCAP file). Your license can be used now.



### 5.4.3 Start Concurrent Use license service

After a successful license activation, the license service (service default name: lmadmin) has to be started. This can be done within the Windows Task Manager (register 'Services') by right-clicking on the service 'lmadmin' and choosing 'Start the service'.



#### 5.4.4 Concurrent Use License Administration with FlexNet Publisher

To get information regarding the Concurrent Use license usage, the FlexNet Publisher offers a browser based application.

The deployment of the Concurrent Use license service and the license administration is conducted with the 'FlexNet Publisher License Server Manager' of Flexera Software.

To request information regarding the license service, the FlexNet Publisher offers a browser-based application. The access is made available by the following address: <http://<servername>:<HTTP-Port>/> (Default: <http://localhost:8090/>).

In FlexNet Publisher, the two board categories (registers) 'Dashboard' and 'Administration' are available:

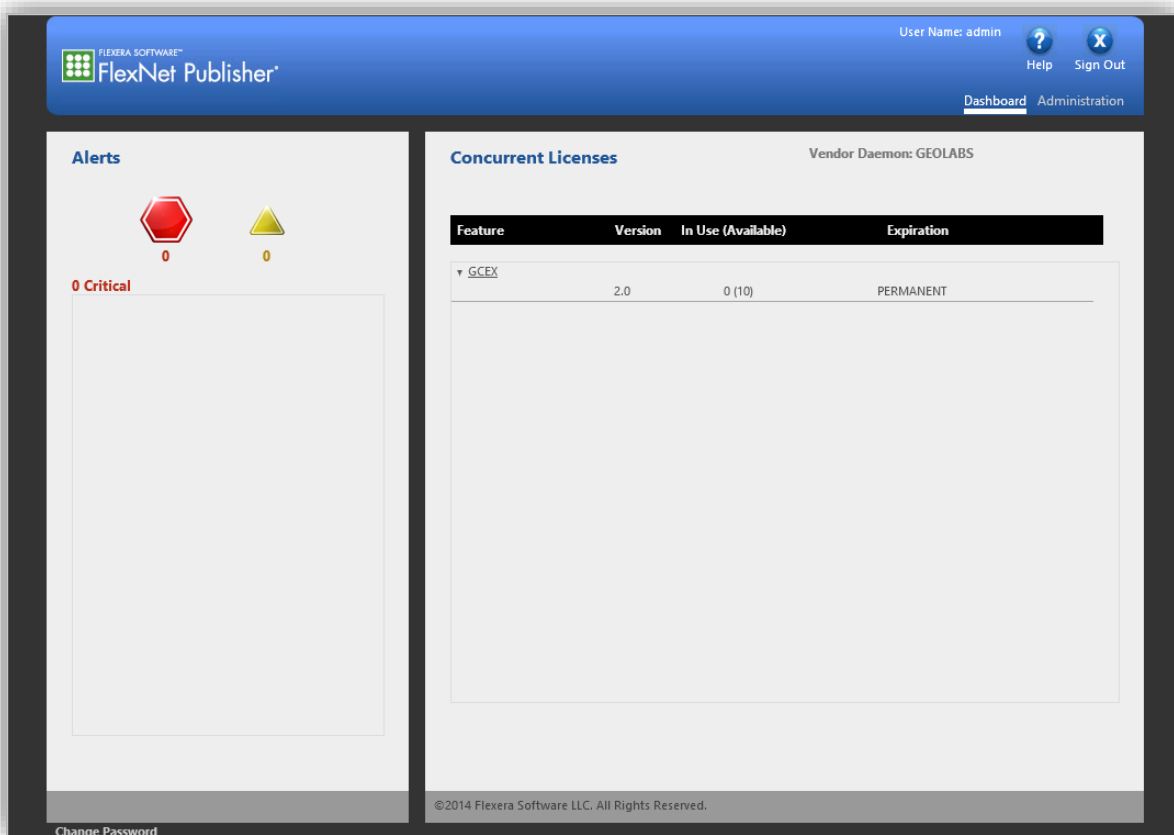
##### Register 'Dashboard'

The landing page shows the Dashboard with all available Concurrent Use Licenses and the current license usage.

The licenses of GISconnector for Excel are described as 'GCEX' in the column 'Feature'. The column 'Version' displays the supported GISconnector for Excel version.

In column 'In Use (Available)' all Concurrent Use licenses are listed and it shows how many licenses have been checked out resp. are in use right now.

In case the Concurrent Use license installed expires, the expiration date is shown in column 'Expiration'.



The screenshot shows the FlexNet Publisher interface. The top navigation bar includes the Flexera Software logo, the text 'FlexNet Publisher', and user information: 'User Name: admin', 'Help', and 'Sign Out'. Below the navigation bar, there are two main sections: 'Alerts' and 'Concurrent Licenses'.

**Alerts Section:** This section displays two icons: a red octagon with the number '0' and a yellow triangle with the number '0'. Below these icons, it shows '0 Critical'.

**Concurrent Licenses Section:** This section is titled 'Concurrent Licenses' and shows 'Vendor Daemon: GEOLABS'. It contains a table with the following columns: 'Feature', 'Version', 'In Use (Available)', and 'Expiration'.

Feature	Version	In Use (Available)	Expiration
GCEX	2.0	0 (10)	PERMANENT

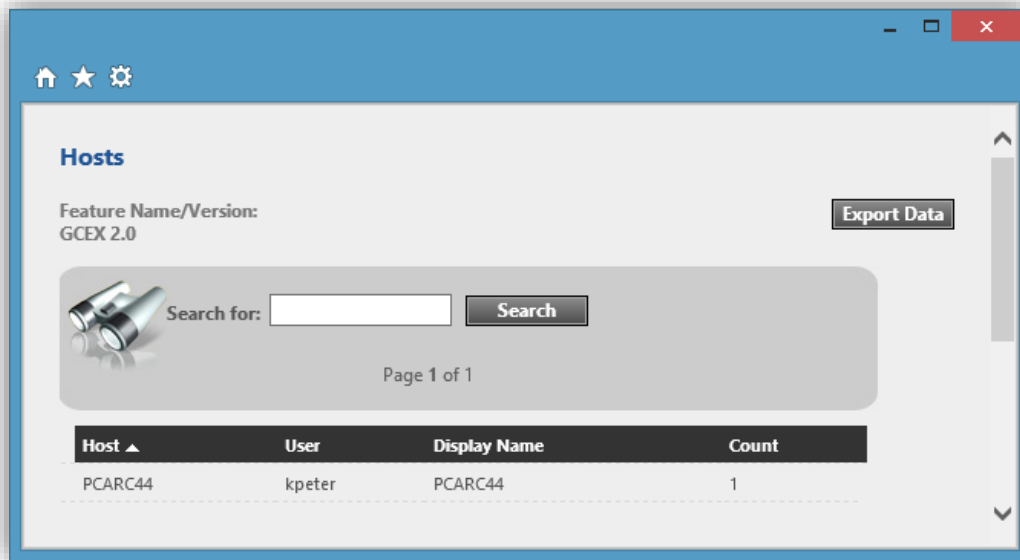
At the bottom of the interface, there is a 'Change Password' link and a copyright notice: '©2014 Flexera Software LLC. All Rights Reserved.'

If a license is in use right now the link 'Hosts' is additionally available in a 5th column.

Concurrent Licenses			Vendor Daemon: GEOLABS	
Feature	Version	In Use (Available)	Expiration	
▼ <u>GCEX</u>	2.0	1 (10)	PERMANENT	<u>Hosts</u>



By clicking on hosts, you can see the clients who are using GISconnector licenses right now.



### Register 'Administration'

To access the Administration, you have to enter user name and password.

Default login data:

User Name: admin

Password: admin

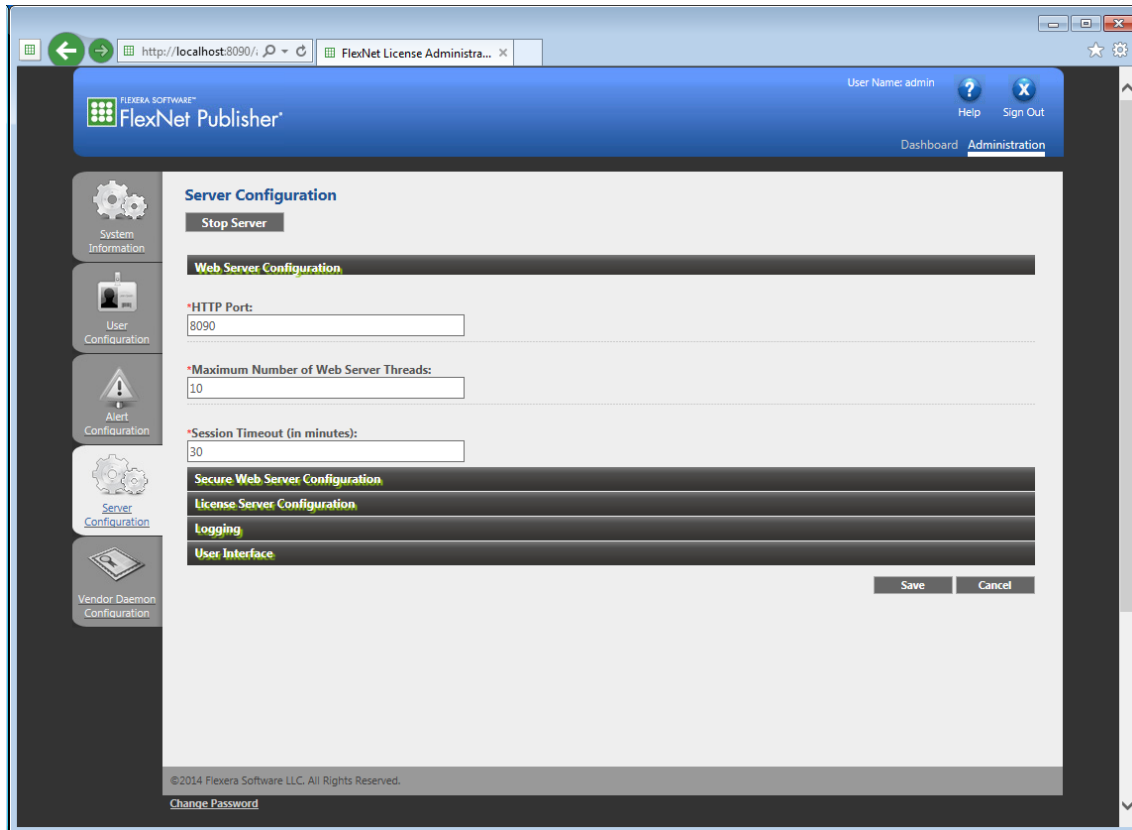
When you log in the first time, you will be prompted to change your password.

At Administration five main tabs are available:

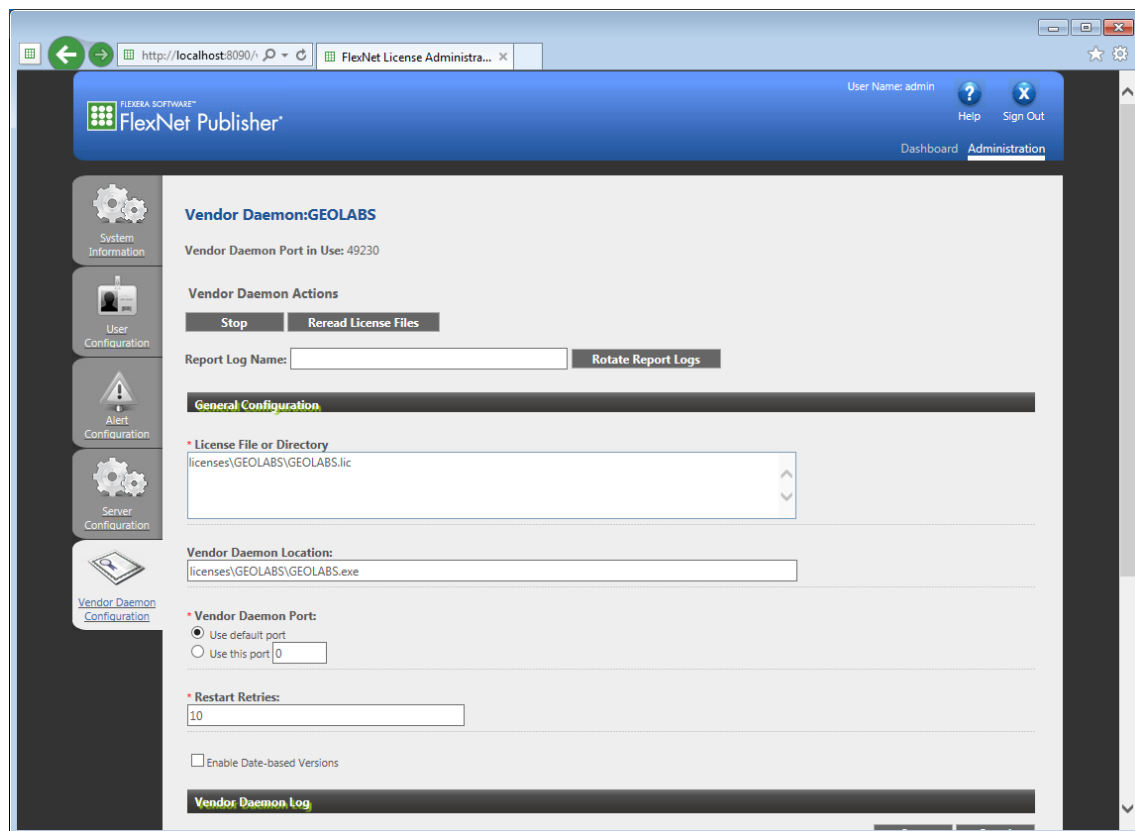
- System Information
- User Configuration
- Alert Configuration
- Server Configuration

If you want to access the web interface via HTTPS, you can configure it here (enable

HTTPS). Per default the HTTPS-Port is 0 (no HTTPS). If you change this port to use HTTPS, you must stop the license server and restart it.



- **Vendor Daemon Configuration**  
The Vendor Daemon Port controls the intern communication of the server and the Vendor Daemon. Per default this Port must not be defined (which is also not possible during installation). However, if you use a firewall, you should define this port:



To get further information regarding those categories, press 'Help'.

## 6. Script-based licensing (System Administrator)

The GI license administration enables a script-based import of the GISconnector license files. The application 'GeolabsAdministrator.exe' (C:\Program Files (x86)\GI Geolabs GmbH\GISconnector for Excel\Licensing\GeolabsAdministrator) offers the parameter 'import' for this purpose.

After activating the license files by GI Geolabs GmbH the license files can be imported script-based.

To import license files and activate the GISconnector use the following syntax:

```
cd 'C:\Program Files (x86)\GI Geolabs GmbH\GISconnector for  
Excel\Licensing\GeolabsAdministrator'  
  
GeolabsAdministrator.exe -import  
/workingdirectory:<Speicherverzeichnis der Lizenzdateien>
```

Sample script (Import.bat) to import the license file:

```
@echo off  
  
'C:\Program Files (x86)\GI Geolabs GmbH\GISconnector for  
Excel\Licensing\GeolabsAdministrator\GeolabsAdministrator.exe' -  
import /workingdirectory:C:\Users\<Benutzer>\Downloads  
  
if errorlevel 1 (  
    echo Import failed.  
    goto End  
)  
  
echo Import successfully completed.  
  
:End  
Pause
```

## 7. Unattended Installation (System Administrator)

The GISconnector supports unattended installation. This means that it is not necessary to go through the single steps of the setup. To install or uninstall the GISconnector automatically, the software 'Inno Setup' from jrsoftware (<http://www.jrsoftware.org>) is used.

All parameters which are necessary for an unattended installation can be found here: <http://www.jrsoftware.org/ishelp/index.php?topic=setupcmdline>

All parameters which are necessary for an unattended de-installation can be found here: <http://www.jrsoftware.org/ishelp/index.php?topic=uninstcmdline>

For questions, please contact: [info@gi-geolabs.de](mailto:info@gi-geolabs.de)

## Appendix

File types for Single Use and Concurrent Use licensing:

Dateityp	Name
.gsar	Single Use Activation Request
.gsap	Single Use Activation Process
.gsdr	Single Use Deactivation Request
.gsdp	Single Use Deactivation Process
.gsrr	Single Use Repair Request
.gsrp	Single Use Repair Process
.gsur	Single Use Update Request
.gsup	Single Use Update Process
.gcar	Concurrent Use Activation Request
.gcap	Concurrent Use Activation Process
.gcdr	Concurrent Use Deactivation Request
.gcdp	Concurrent Use Deactivation Process
.gcrr	Concurrent Use Repair Request
.gcrp	Concurrent Use Repair Process
.gcur	Concurrent Use Update Request
.gcup	Concurrent Use Update Process