



## Installation instructions

Version 1.2

Issued: June 2015

The GISconnector® is a product of GI Geolabs GmbH, Augsburg, Germany

[www.gisconnector.com](http://www.gisconnector.com)

## Table of content

1. Installation requirements .....	3
2. Installation .....	4
3. Use of ArcGIS licenses by the GISconnector .....	7
4. Start parameter to configure the use of a license level .....	8
5. Script-based licensing (administrator).....	9
6. Unattended installation (administrator) .....	10

## 1. Installation requirements

To install the GISconnector for Excel, you need administration rights for your Windows user account:

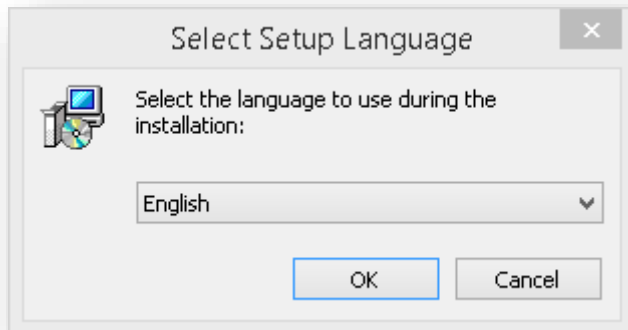
The following system requirements have to be fulfilled:

- ArcGIS for Desktop 10.1 (SP1 recommended)  
also supported are ArcGIS 10.2, 10.2.1, 10.2.2 and 10.3
- Microsoft Excel 2007 (SP2 recommended)  
also supported are Microsoft Excel 2010 und 2013
- Microsoft Windows XP, Windows Vista, Windows 7, Windows 8 and Windows 8.1
- Microsoft .NET Framework 4.0  
(<http://www.microsoft.com/en-US/download/details.aspx?id=17718>)
- Microsoft VSTO-Runtime Environment  
<http://www.microsoft.com/en-us/download/details.aspx?id=44074>  
(Download page is being opened during installation)

## 2. Installation

To start the installation, run the setup executable. If all installation prerequisites are fulfilled, the installation wizard will start.

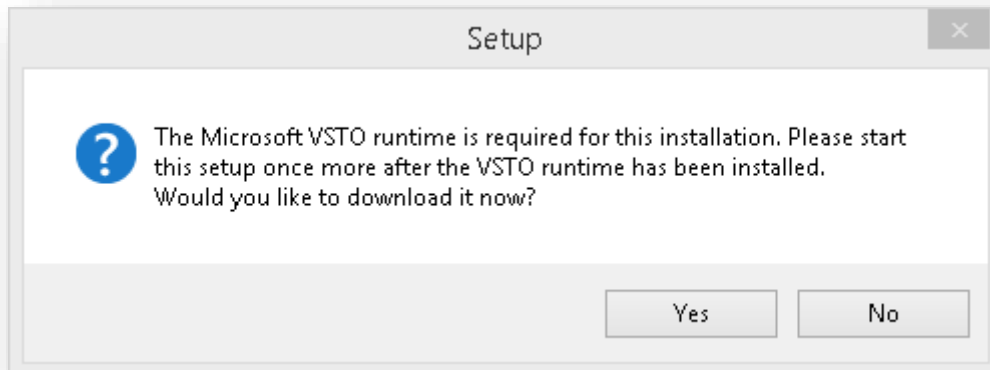
First, choose your language:



To install the Microsoft Excel Add-In, the Microsoft VSTO runtime environment (Visual Studio 2010 Tools for Office Runtime) is required.

If you confirm the following dialog with "Yes", you will be redirected to the download page of Microsoft where the file can be downloaded (app. 40 MB).

(<http://www.microsoft.com/en-US/download/details.aspx?id=42513>).



After downloading, install the VSTO runtime environment. (vstor\_redist.exe)

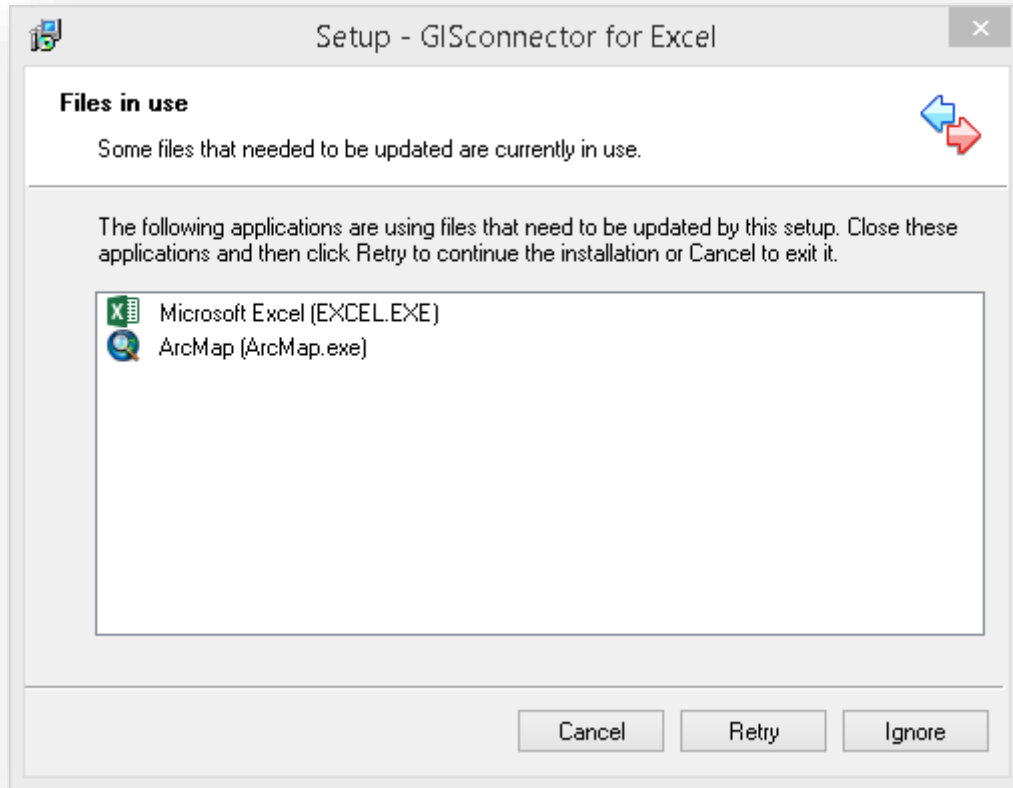
After a successful installation you must again start the setup file of the GISconnector.

Within the next steps, accept the end user license agreement (EULA) and read our general terms of business.

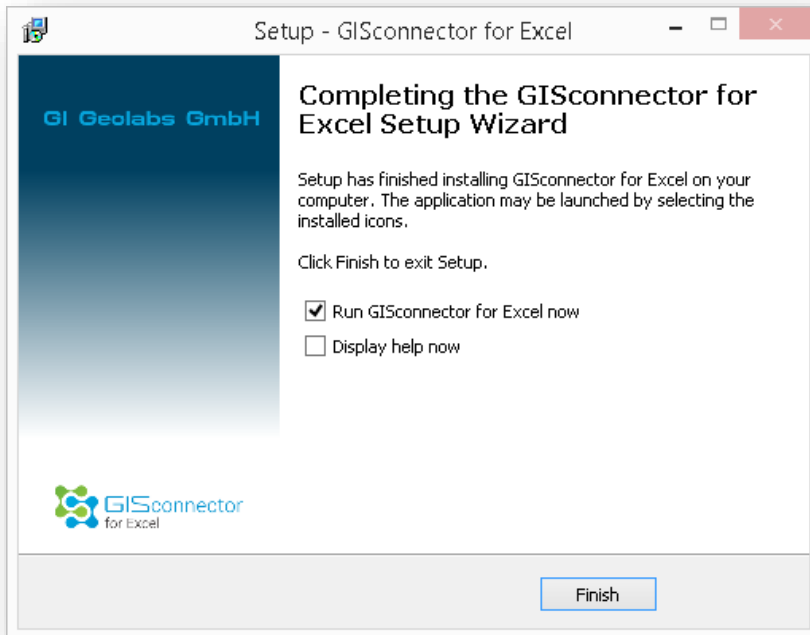
Then, select the installation folder. (Default folder: C:\Program Files (x86)\GI Geolabs

GmbH\GISconnector for Excel)

In case ArcGIS or Excel are still running during the installation, the setup will recognize that. Please close Excel and ArcGIS, then press “Retry” to continue the installation.



After a successful installation the GISconnector for Excel can be started.



If the GISconnector is started, the GISconnector-Icon appears in the system tray. (System-tray customization: “show icon and notifications”).

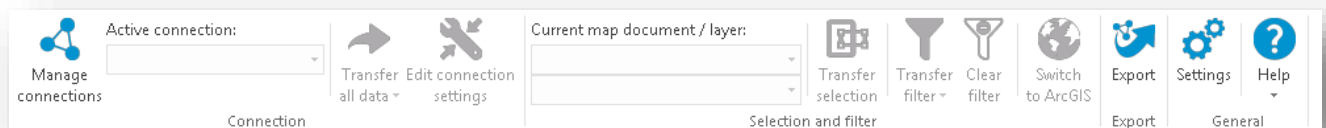


After installing the GISconnector, the new ArcGIS-toolbar and the new ribbon in Excel are available and ready for use.

ArcGIS toolbar „GISconnector for Excel“:



Excel ribbon „GISconnector“:



**If the GISconnector is not licensed, the number of datasets which can be processed is limited to 100.**

Information about how to license the GISconnector can be found in the manual.

### 3. Use of ArcGIS licenses by the GISconnector

**Note: When starting the GISconnector, an ArcGIS license is required.**

Since GISconnector version 1.2, the ArcGIS license which is configured within ArcGIS Administrator, will be used.

If different ArcGIS license levels are available, it is possible to define the license level the GISconnector uses by a command line parameter (see manual, chapter 4).

**Note**

If the GISconnector is started with a license command line parameter and therefore uses a certain ArcGIS license and ArcMap is started with a different license level, two ArcGIS licenses are used resp. consumed at the same time.

**Example**

In ArcGIS Administrator, the use of an advanced concurrent license is defined for example. GISconnector uses a basic license, which is defined by command line parameter.

In this case ArcMap and GISconnector use different ArcGIS licenses, therefore two ArcGIS licenses are needed.

## 4. Start parameter to configure the use of a license level

When installing the GISconnector, in the Windows autostart folder, a short-cut is created which starts the GISconnector during the system start-up. Within this short-cut, a start parameter can be added.

The start parameter follows this syntax: `/licence: <license level>` and can be written in the properties of the short-cut under "target".

Instead of `<license level>`, you insert the desired value. The following license levels can be entered: basic, standard und advanced

The complete short-cuts could be for example:

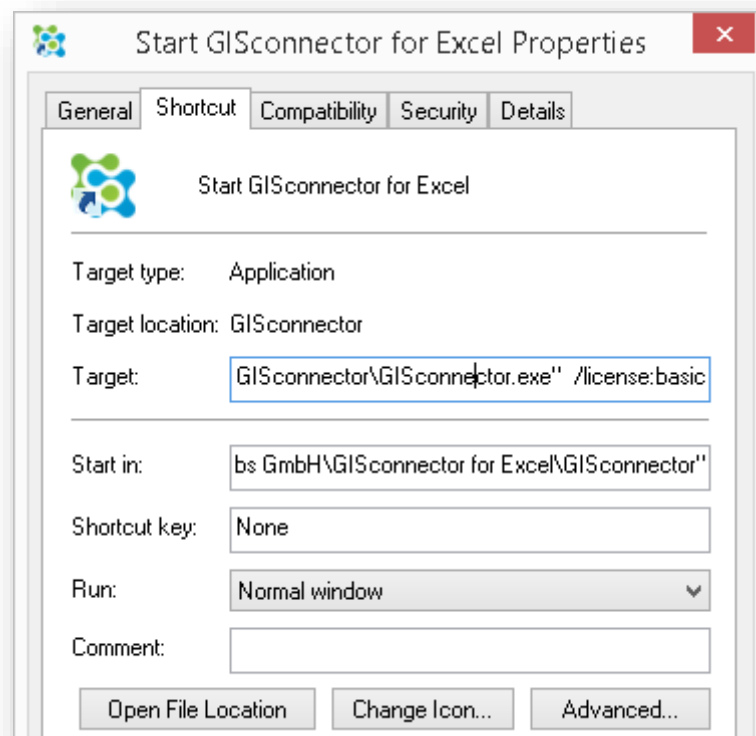
```
"C:\Program Files (x86)\GI Geolabs GmbH\GISconnector for Excel\GISconnector\  
GISconnector.exe" /licence:basic
```

### Windows 7

Go to: Start/All programs/autostart und click on the GISconnector-Shortcut with the right mouse button to enter the autostart menu.

### Windows 8

Go to: "C:\ProgramData\Microsoft\Windows\Start Menu\Programs\Startup" und öffnen Sie dort die Eigenschaften des Short-cuts:





## 5. Script-based licensing (system administrator)

With the GI license administration program, enables a script-based generation resp. export of license files. After these license files have been activated by GI Geolabs, the license administration program facilitates also a script-based license import of the activated license files. The application „lmc.exe“(C:\Program Files (x86)\GI Geoinformatik GmbH\GI Lizenzverwaltung\lmc.exe) offers the parameters „export“ and „import“ for this purpose.

Within the command prompt, the folder is defined where license files should be created:

The syntax works as follows:

```
cd "C:\Program Files (x86)\GI Geoinformatik GmbH\GI Lizenzverwaltung"  
lmc.exe -export /workingdirectory:<folder to store the license files>
```

To import license files and activate the GISconnector, use the following syntax:

```
cd "C:\Program Files (x86)\GI Geoinformatik GmbH\GI Lizenzverwaltung"  
lmc.exe -import /workingdirectory:<folder with activated license files>
```

Samplescript (Export.bat) to generate the licence file:

```
@echo off  
  
"C:\Program Files (x86)\GI Geoinformatik GmbH\GI Lizenzverwaltung\lmc.exe" -export  
/workingdirectory:C:\Users\<User>\Downloads  
if errorlevel 1 (  
    echo Export failed.  
    goto End  
)  
echo Export successfully completed.  
  
:End  
pause
```

Sample script (Import.bat) to import the licence file.

```
@echo off  
  
"C:\Program Files (x86)\GI Geoinformatik GmbH\GI Lizenzverwaltung\lmc.exe" -import  
/workingdirectory:C:\Users\<User>\Downloads  
if errorlevel 1 (  
    echo Import failed.  
    goto End  
)  
echo Import successfully completed.  
  
:End  
pause
```

## 6. Unattended installation (system administrator)

The GISconnector supports unattended installation. This means that it is not necessary to go through the single steps of the setup. In order to install or deinstall the GISconnector automatically, the software „Inno Setup“ from jrsoftware (<http://www.jrsoftware.org>) is used.

- All parameters which are necessary for an unattended installation can be found here: <http://www.jrsoftware.org/ishelp/index.php?topic=setupcmdline>
- All parameters which are necessary for an unattended de-installation can be found here: <http://www.jrsoftware.org/ishelp/index.php?topic=uninstcmdline>

**For questions, please contact: [info@gi-geolabs.de](mailto:info@gi-geolabs.de)**